

Care

Maintenance

- This product requires regular maintenance to keep it in good working order.
- Keep moving parts clean and well lubricated.
- Regularly check all parts of the product to ensure that they are operating correctly and for signs of wear or damage.
- Do not use this product if any part is broken, torn or missing.
- Only replacement parts supplied or recommended by Kiddicare should be used.
- Contact Kiddicare using the details given below.

Cleaning

- The seat may be cleaned by sponging lightly using warm water and a mild detergent. Dry thoroughly before storing.
- Sponge clean metal or plastic components with mild detergent and warm water.
- Never clean with abrasive, ammonia based, bleach based or spirit type cleaners.
- After exposure to damp conditions, dry off with a soft cloth and leave fully open in a warm environment. Storing damp will encourage mildew to form.
- Store in a dry safe place.
- Do not leave in sunlight for prolonged periods - some fabrics may fade.

kiddicare

manufactured in
China for kiddicare
LE7 1AD
kiddicare.com

kiddicare

stroller



**IMPORTANT:
KEEP FOR FUTURE REFERENCE,
READ CAREFULLY**



Care

Safety

This product is suitable for one child from 6 months and up to a maximum weight of 15kg.

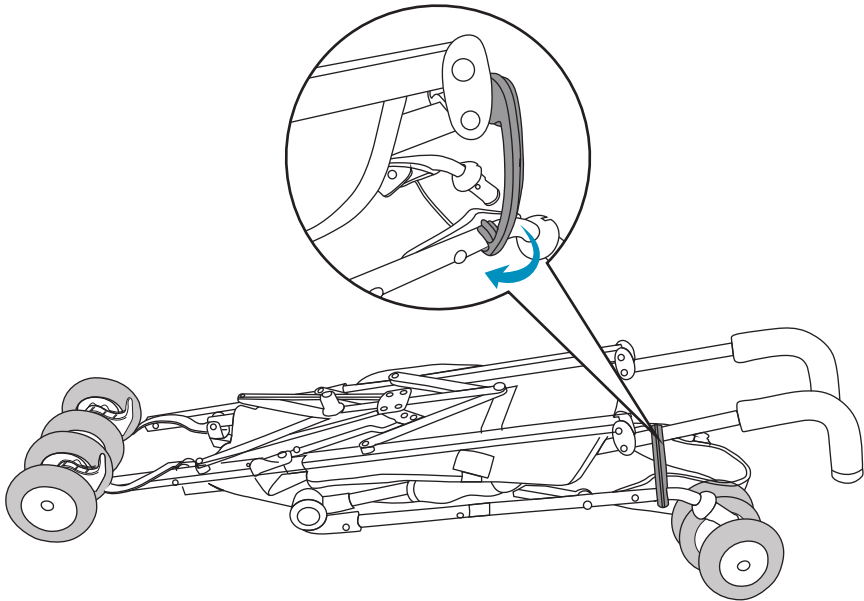
Warning:

- **YOUR CHILD'S SAFETY IS YOUR RESPONSIBILITY.**
- Never leave the child unattended, even for the shortest time.
- Do not allow your child to climb unassisted into the stroller.
- Ensure your child wears a correctly fitted and adjusted harness at all times.
- Ensure children are clear of moving parts before opening, folding and making adjustments.
- Overloading, incorrect folding and the use of non-approved accessories may damage or break this stroller.
- Never leave raincovers, hoods or aprons on indoors, in a hot atmosphere or near a heat source - your child may overheat.
- Do not use replacement parts or accessories, e.g. child seats, bag hooks, raincovers etc. other than those approved by Kiddicare as they may make the stroller unsafe.
- Do not overload with additional children, goods or accessories. Bags and other items must not be hung from the handle.
- Always apply the brakes when stationary.
- Be careful when going up or down kerbs. Remove your child and fold the stroller when going up or down stairs or escalators.
- Do not use the stroller in a manner for which it was not designed.
- Do not let children play with or hang on to the stroller.
- Hold on to your stroller when close to moving road vehicles or trains. Even with the brake on, the draught from the vehicle may move the stroller.
- Ensure that all locking devices are engaged before use.
- Do not let your child play with this product.
- If your stroller is used by someone unfamiliar with it e.g. grandparents, always show them how it works.
- The seat unit is not suitable for children under 6 months.
- This product is not suitable for running or skating.
- Maximum basket load - 2kg.

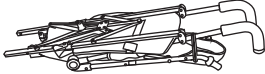
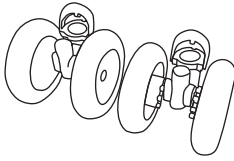
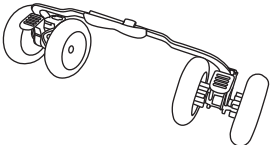
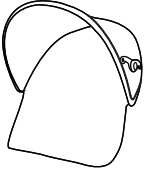
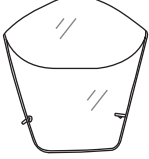
Complies with **EN 1888:2012**

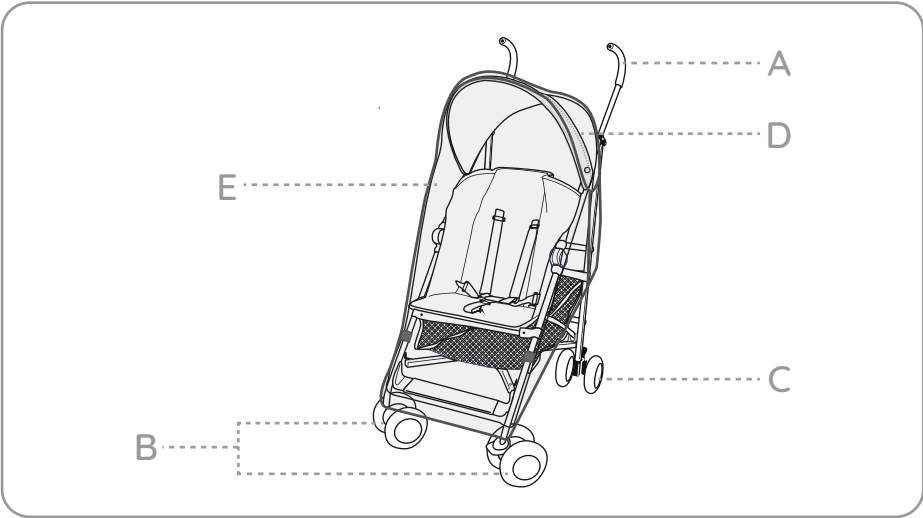
Folding

4



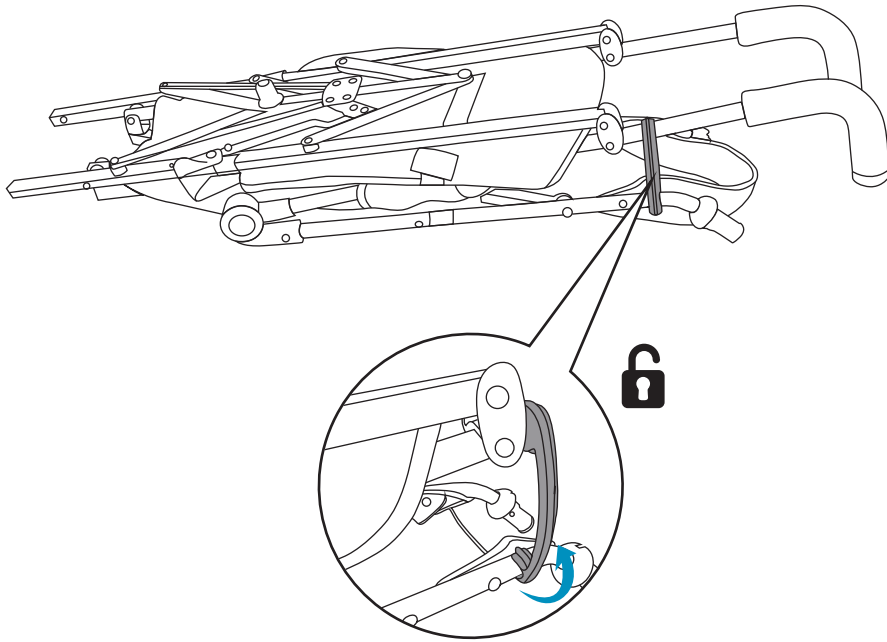
Parts

<p>A</p>  <p>x1</p>	<p>B</p>  <p>x2</p>	<p>C</p>  <p>x1</p>
<p>D</p>  <p>x1 available separately</p>	<p>E</p>  <p>x1 available separately</p>	



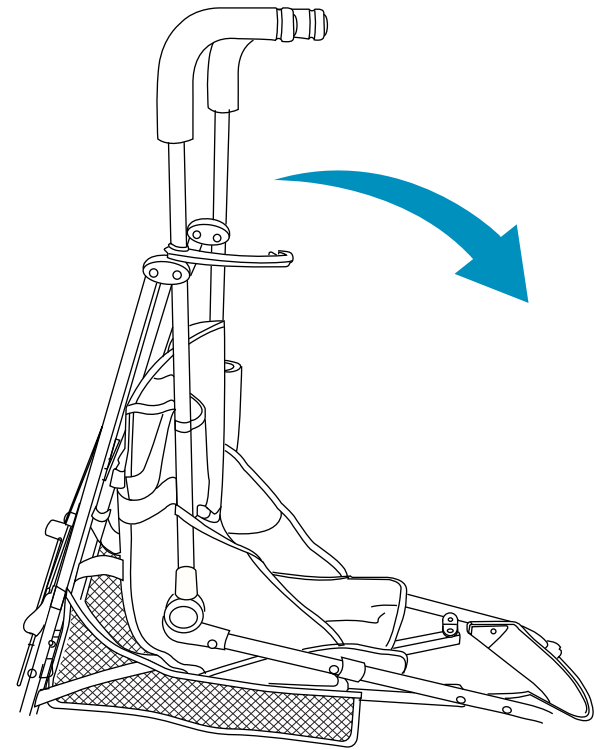
Assembly

1



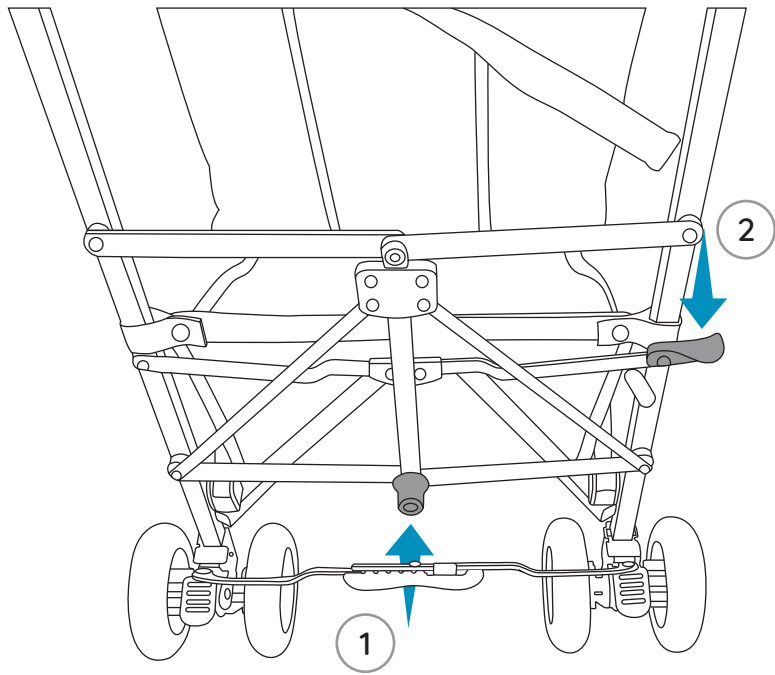
Folding

3



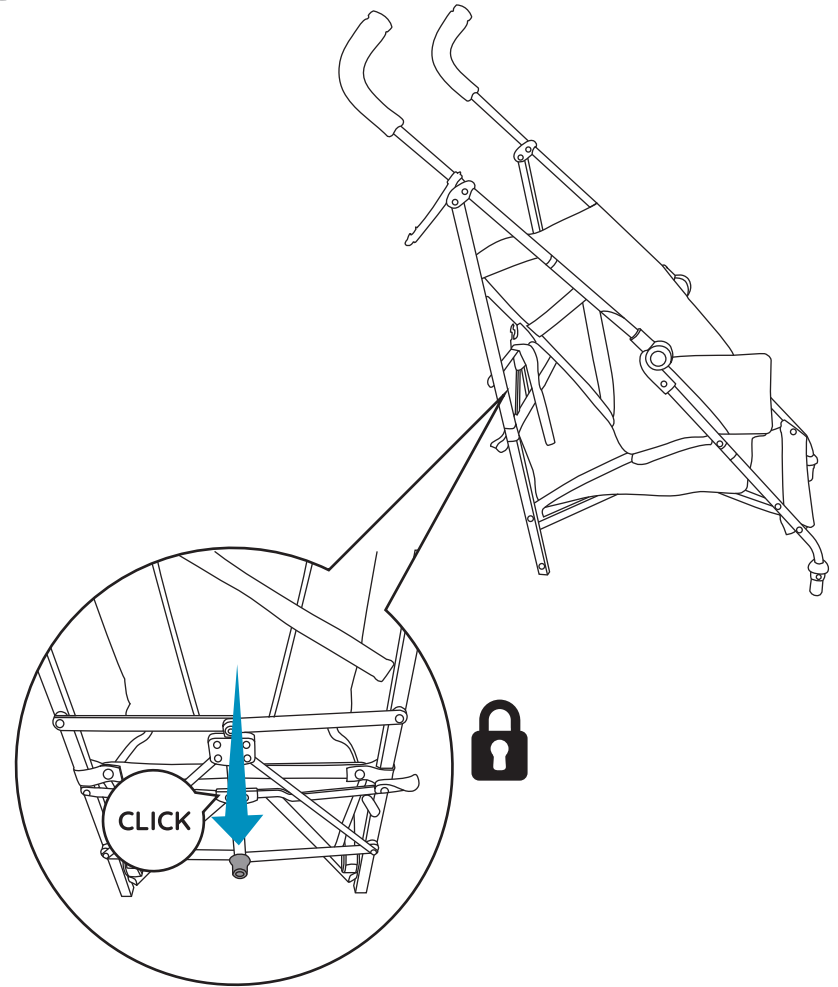
Folding

2



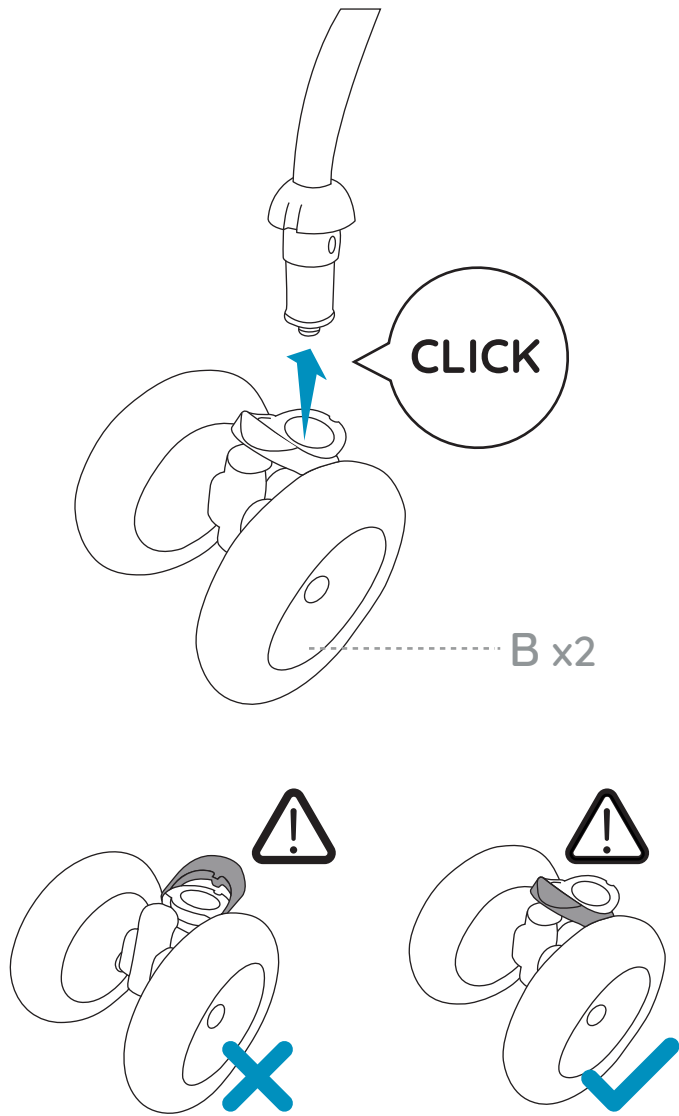
Assembly

2



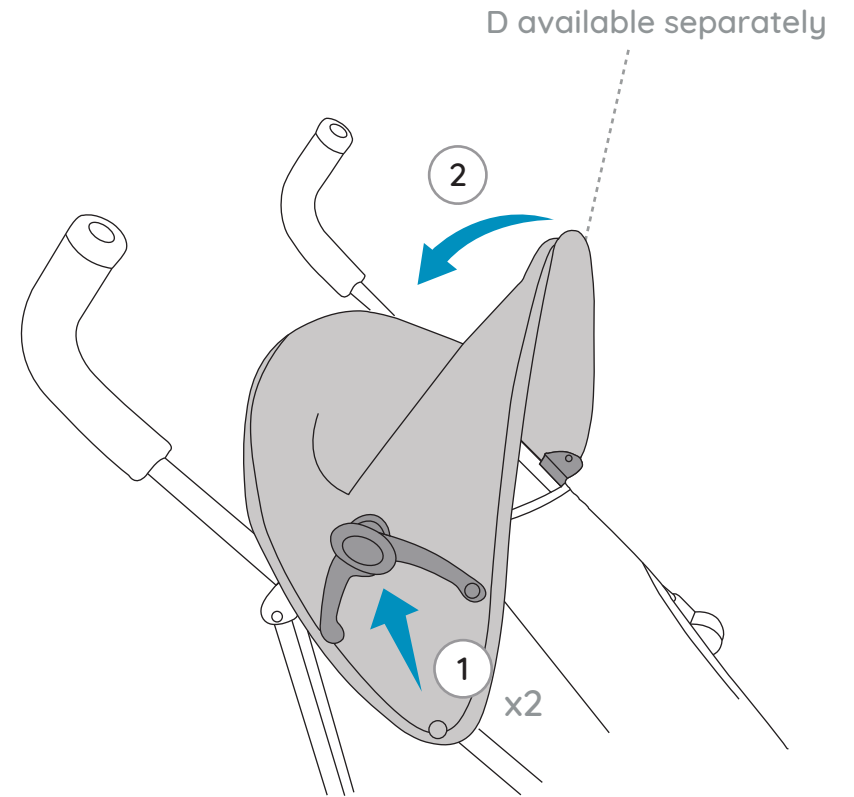
Assembly

3



Folding

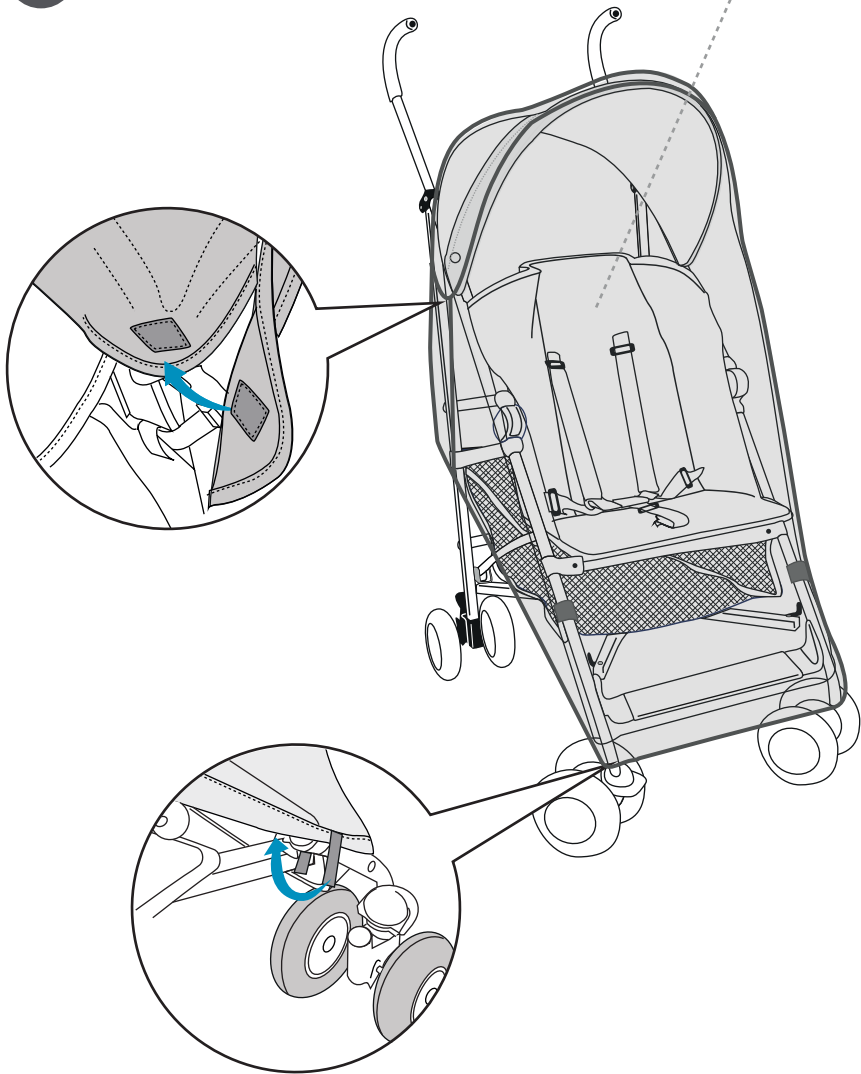
1



In Use

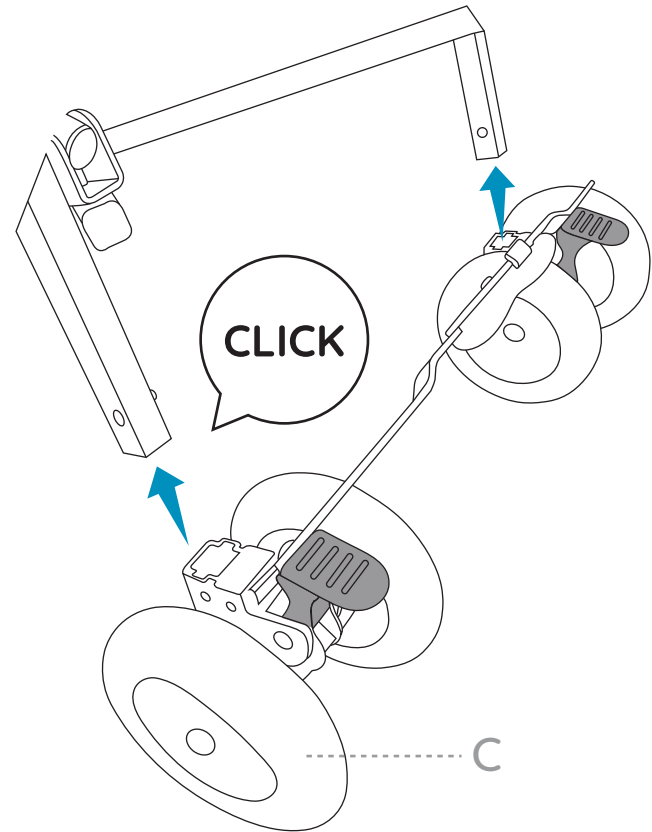
6

E available separately



Assembly

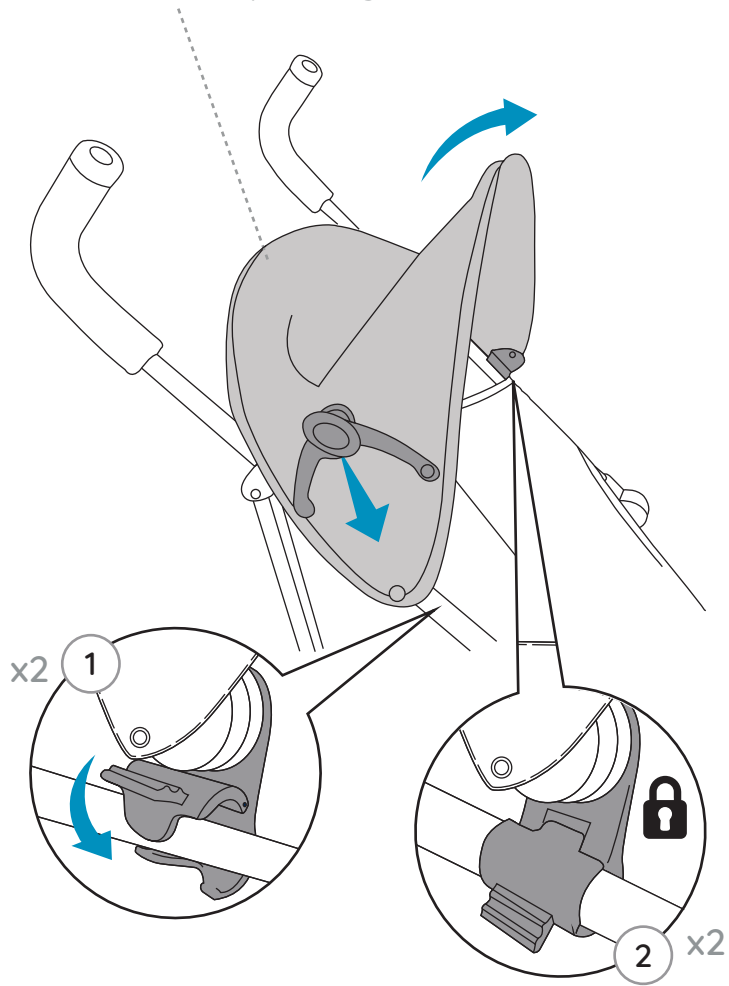
4



Assembly

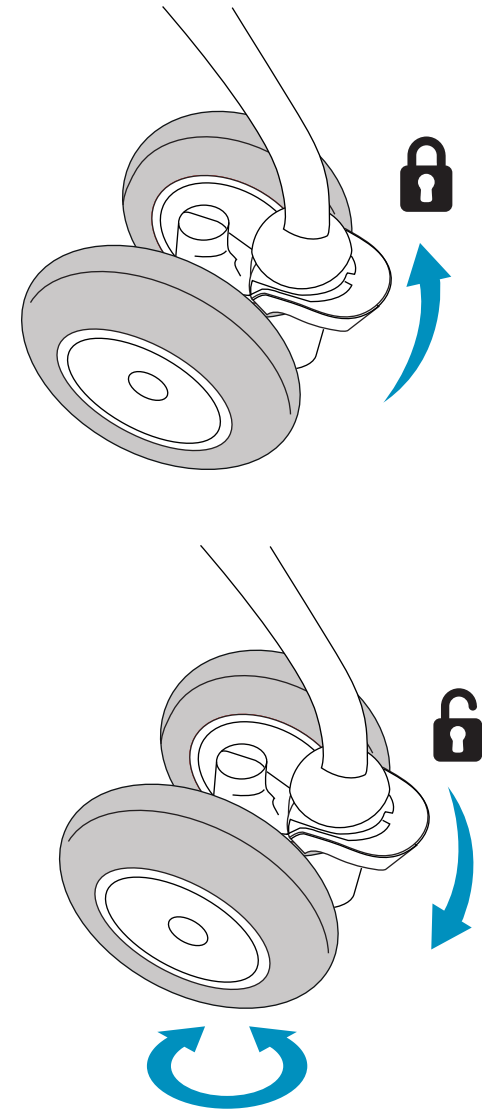
5

D available separately



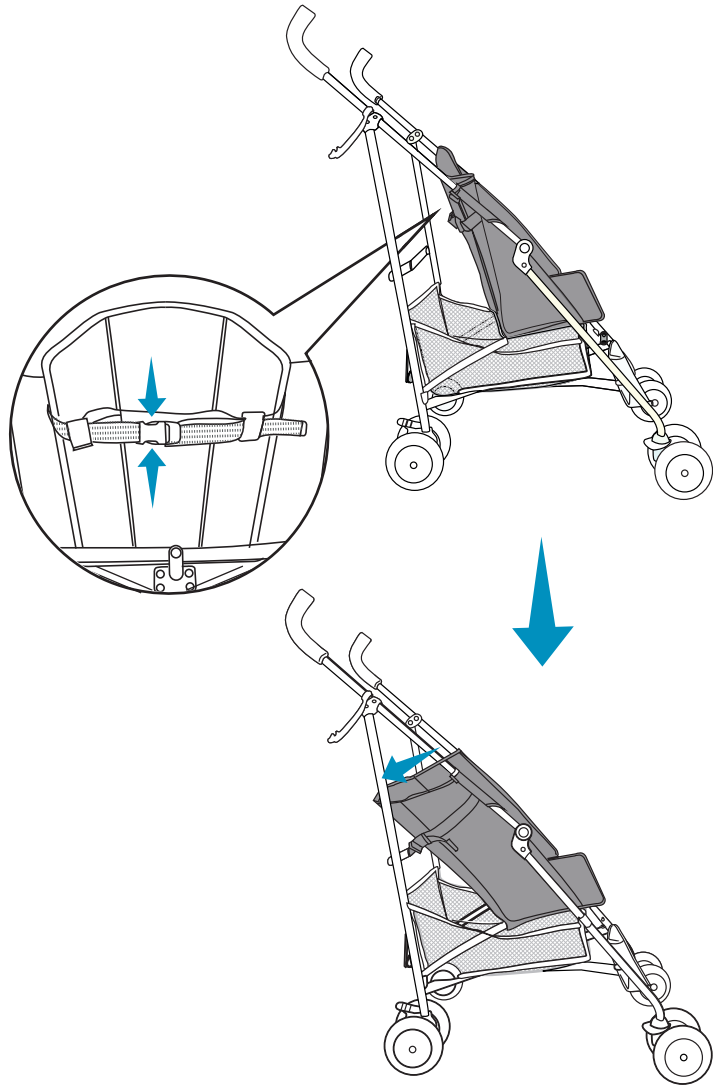
In Use

5



In Use

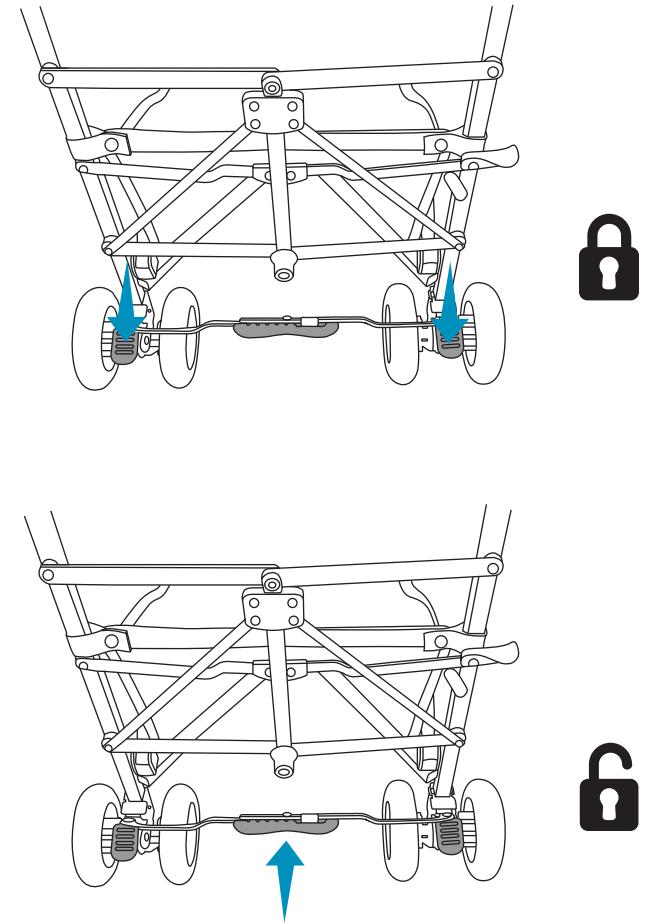
4



always ensure that the seat is securely fixed in position before use.

In Use

1



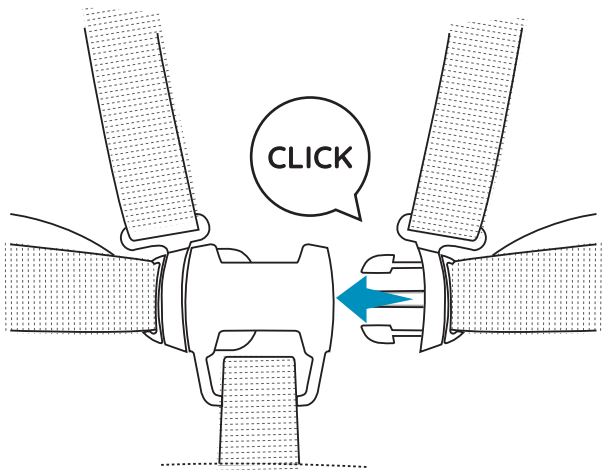
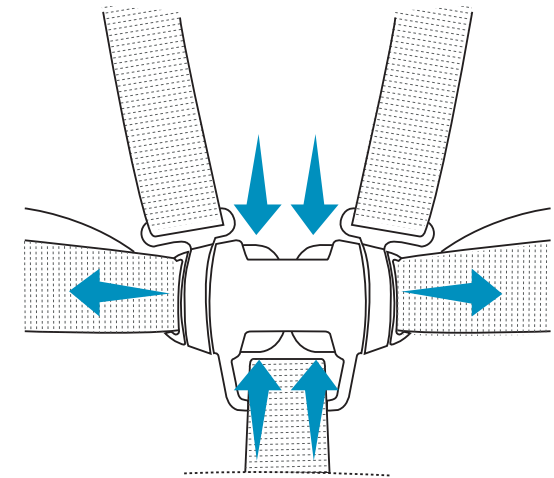
ensure the parking brake is engaged during the loading and unloading of children.



always apply the parking brake when the stroller is stationary.

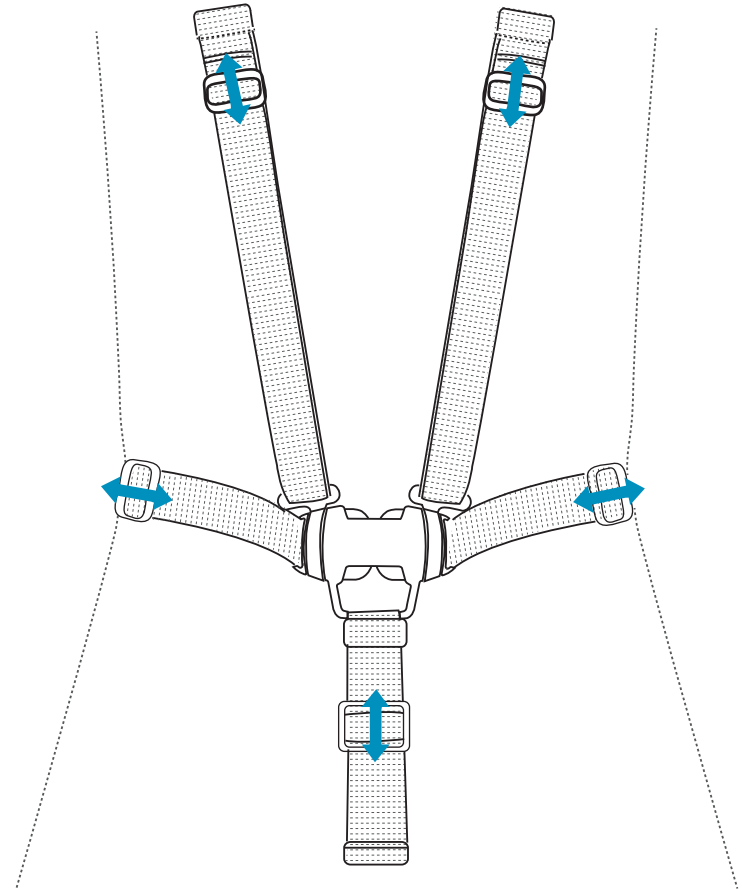
In Use

2



In Use

3



always adjust the harness to fit your child correctly for their comfort and safety. A loose fitting harness can be very dangerous.