

# Care

---

## Maintenance

- This product requires regular maintenance to keep it in good working order.
- Keep moving parts clean and well lubricated.
- Regularly check all parts of the product to ensure that they are operating correctly and for signs of wear or damage.
- Do not use this product if any part is broken, torn or missing.
- Only replacement parts supplied or recommended by Kiddicare should be used.
- Contact Kiddicare using the details given below.

## Cleaning

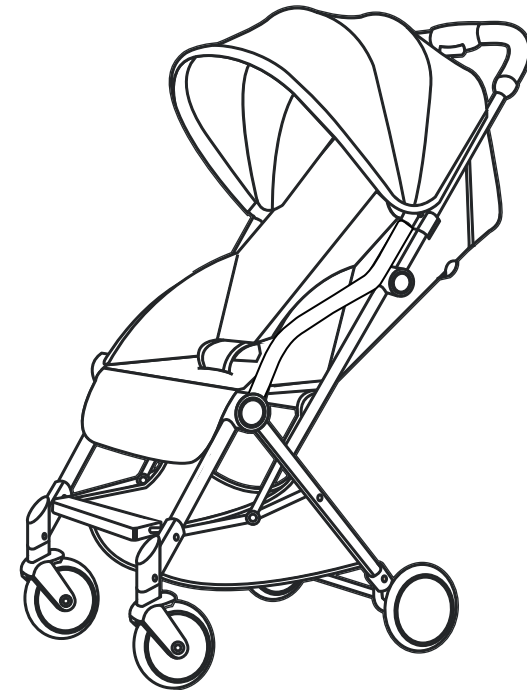
- The seat may be cleaned by sponging lightly using warm water and a mild detergent. Dry thoroughly before storing.
- Sponge clean metal or plastic components with mild detergent and warm water.
- Never clean with abrasive, ammonia based, bleach based or spirit type cleaners.
- After exposure to damp conditions, dry off with a soft cloth and leave fully open in a warm environment. Storing damp will encourage mildew to form.
- Store in a dry safe place.
- Do not leave in sunlight for prolonged periods - some fabrics may fade.

**kiddicare**

manufactured in  
China for kiddicare  
LE7 1AD  
kiddicare.com

**kiddicare**

# compact stroller



**IMPORTANT:  
KEEP FOR FUTURE REFERENCE,  
READ CAREFULLY**



# Care

---

## Safety

This product is suitable for one child from birth (0 months) and up to a maximum weight of 15kg.

### Warning:

- **YOUR CHILD'S SAFETY IS YOUR RESPONSIBILITY.**
- Never leave the child unattended, even for the shortest time.
- Do not allow your child to climb unassisted into the stroller.
- Ensure your child wears a correctly fitted and adjusted harness at all times.
- Ensure children are clear of moving parts before opening, folding and making adjustments.
- Overloading, incorrect folding and the use of non-approved accessories may damage or break this stroller.
- Never leave raincovers, hoods or aprons on indoors, in a hot atmosphere or near a heat source - your child may overheat.
- Do not use replacement parts or accessories, e.g. child seats, bag hooks, raincovers etc. other than those approved by Kiddicare as they may make the stroller unsafe.
- Do not overload with additional children, goods or accessories. Bags and other items must not be hung from the handle.
- Always apply the brakes when stationary.
- Be careful when going up or down kerbs. Remove your child and fold the stroller when going up or down stairs or escalators.
- Do not use the stroller in a manner for which it was not designed.
- Do not let children play with or hang on to the stroller.
- Hold on to your stroller when close to moving road vehicles or trains. Even with the brake on, the draught from the vehicle may move the stroller.
- Ensure that all locking devices are engaged before use.
- Do not let your child play with this product.
- If your stroller is used by someone unfamiliar with it e.g. grandparents, always show them how it works.
- Use the most reclined position for new born babies.
- This product is not suitable for running or skating.
- Maximum basket load - 2kg.

Complies with **EN 1888:2012**

# Folding

---

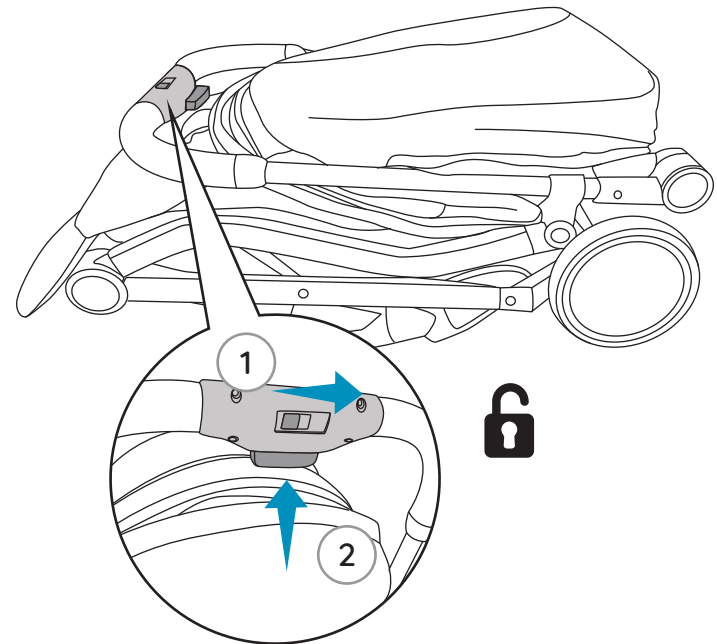
3



# Unfolding

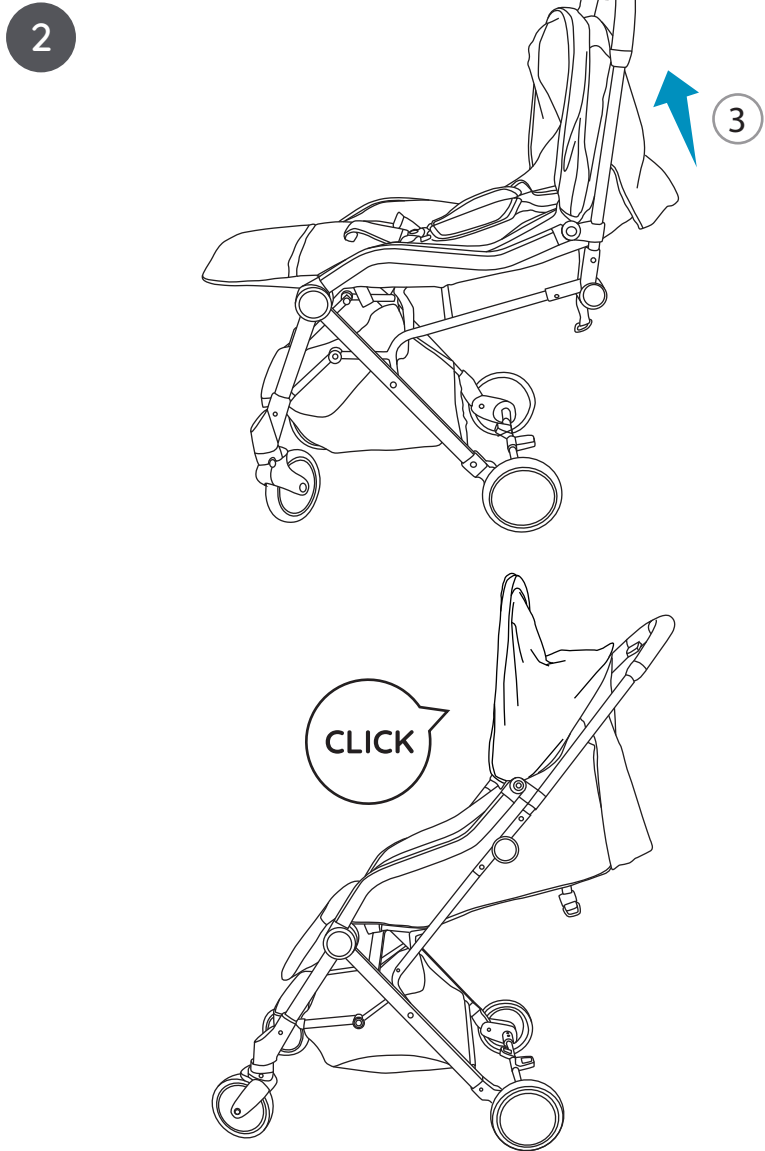
---

1



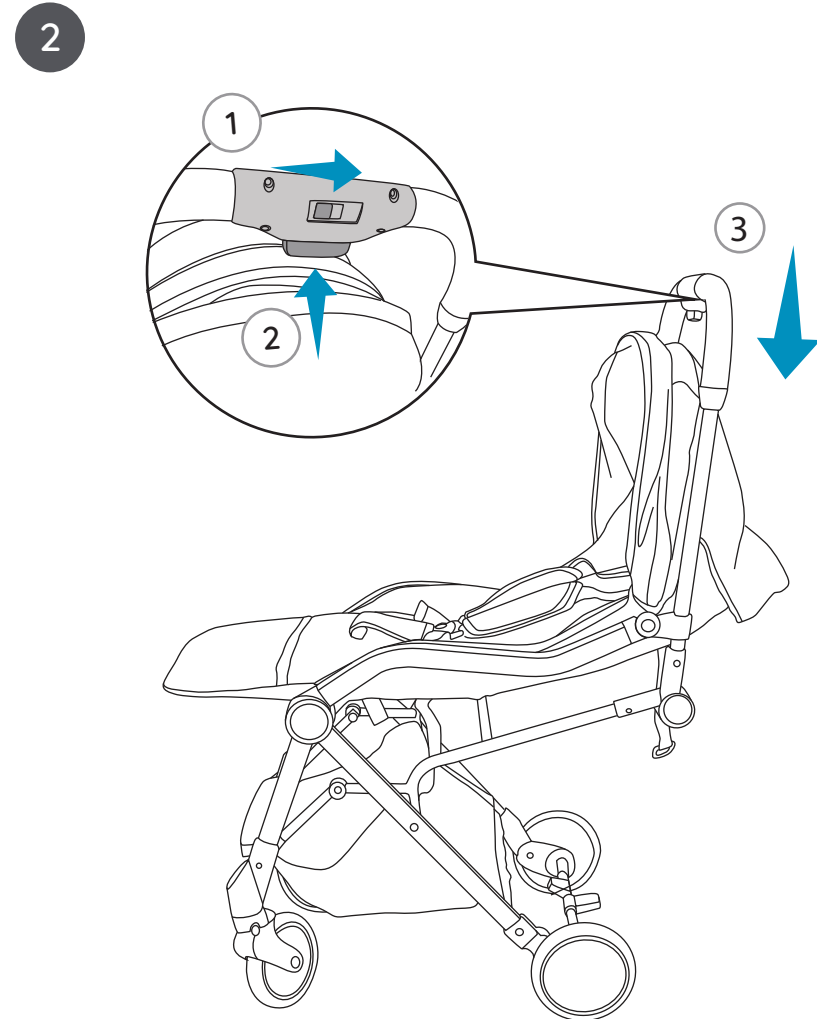
# Unfolding

---



# Folding

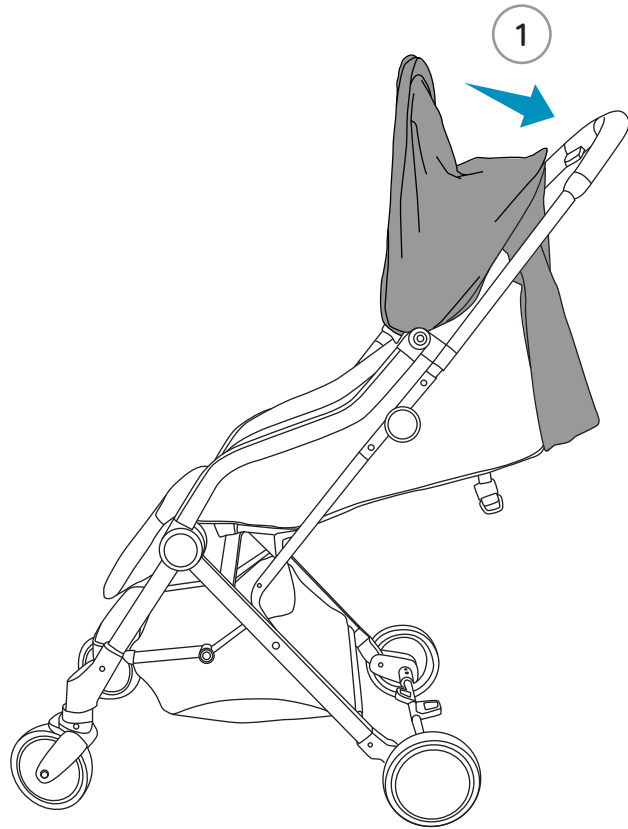
---



# Folding

---

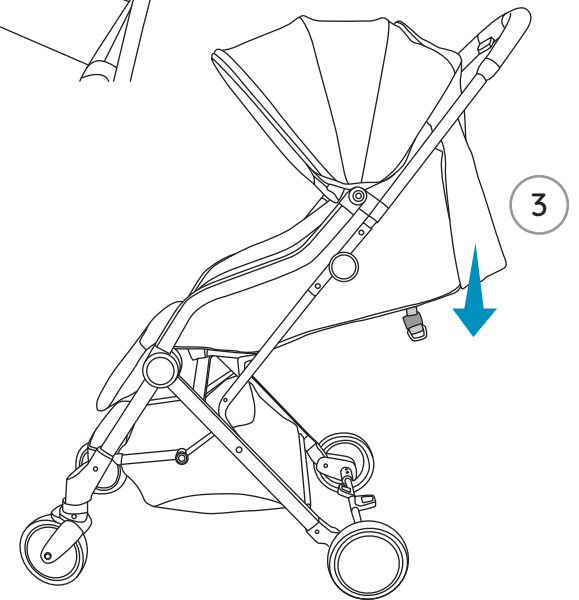
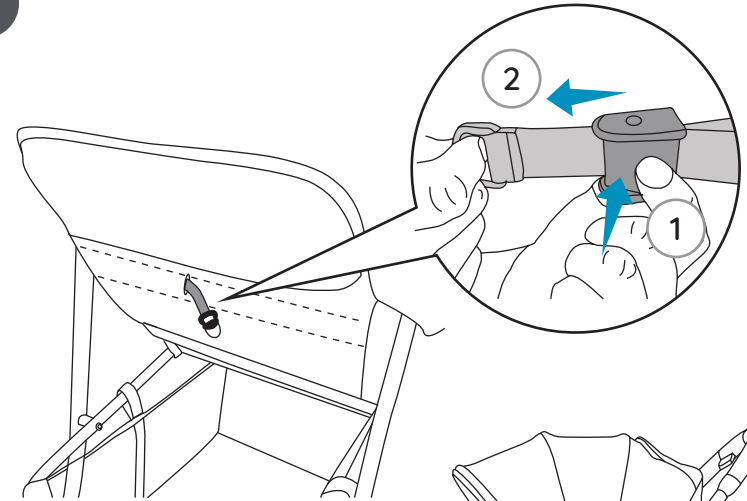
1



# In Use

---

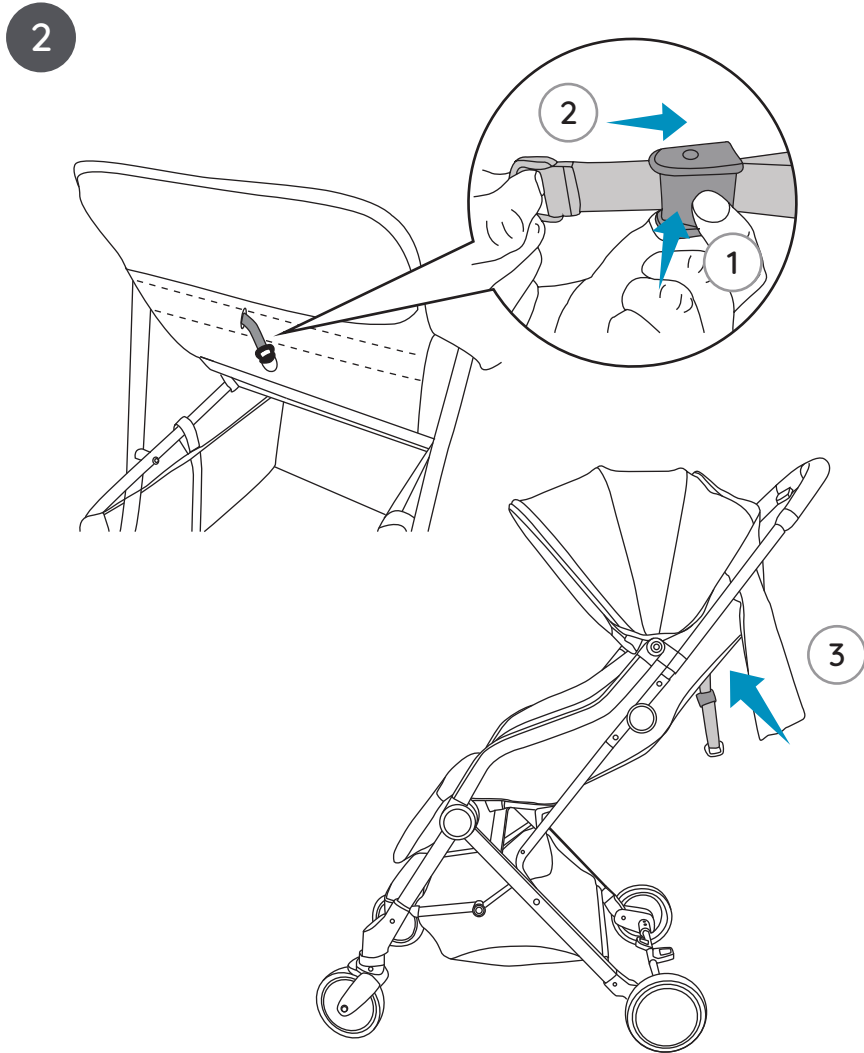
1



always ensure that the seat is securely fixed in position before use.

# In Use

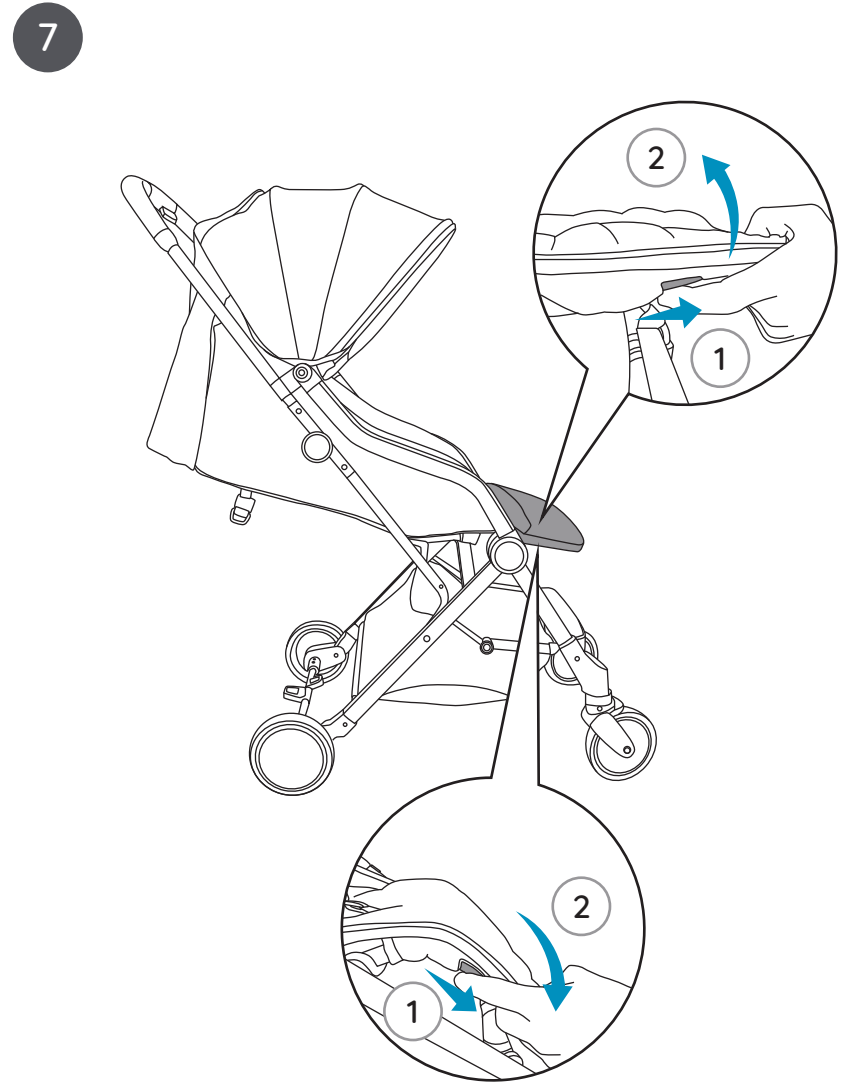
---



always ensure that the seat is securely fixed in position before use.

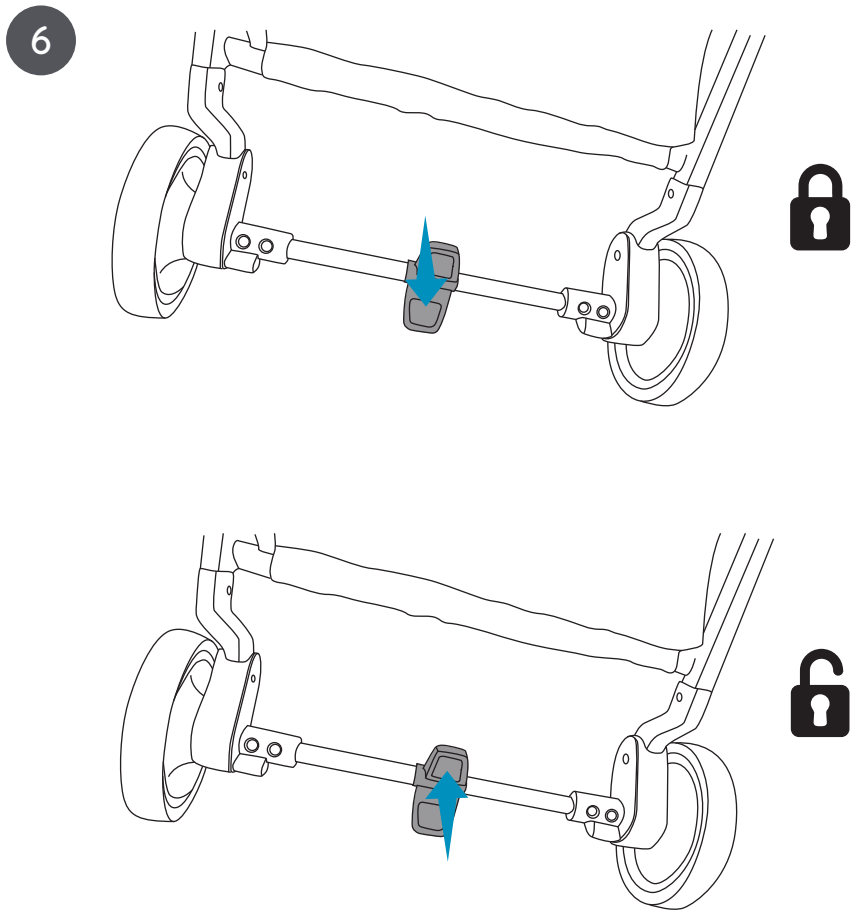
# In Use


---




# In Use

---

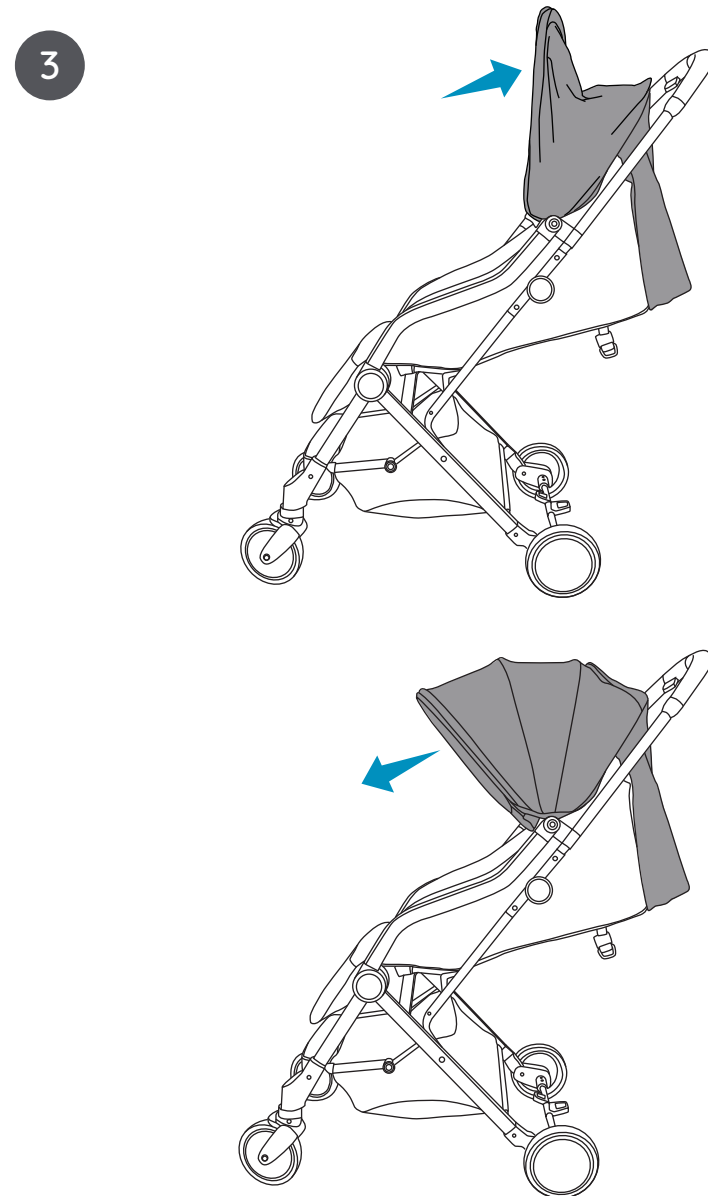


 ensure the parking brake is engaged during the loading and unloading of children.

 always apply the parking brake when the stroller is stationary.

# In Use

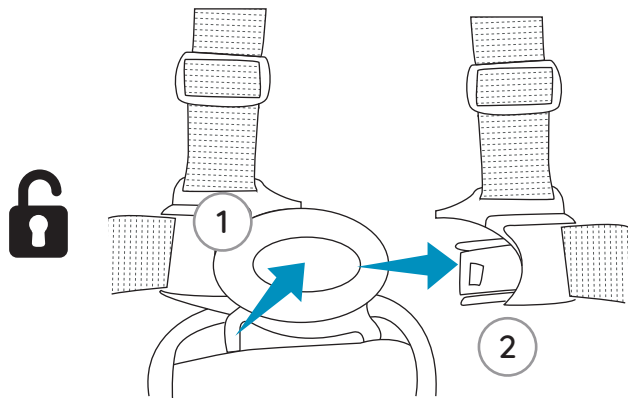
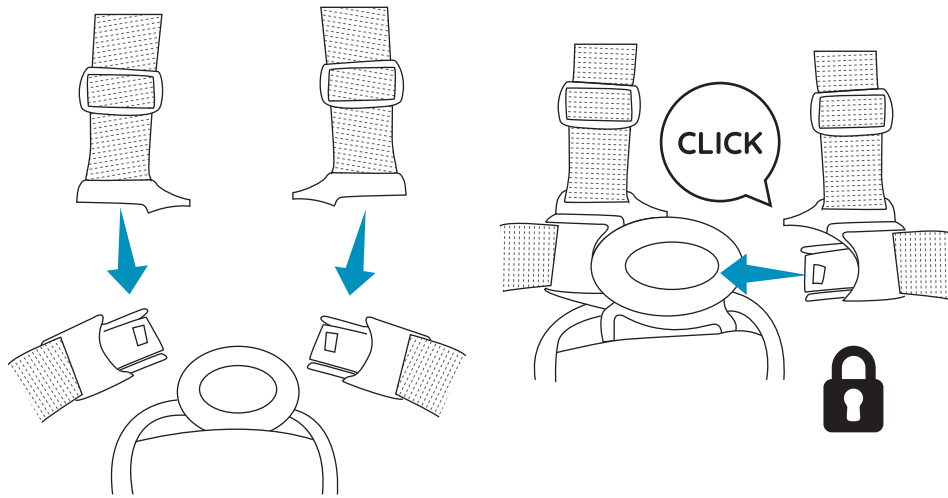
---



# In Use

---

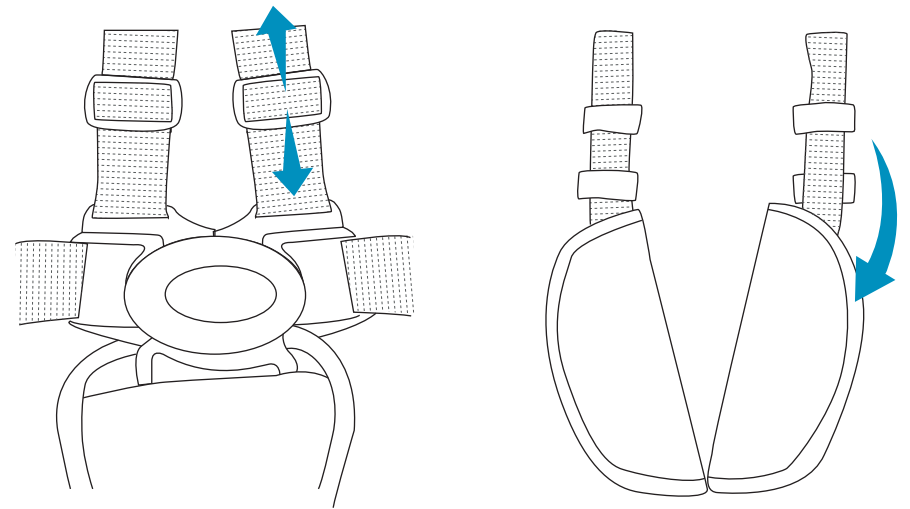
4



# In Use

---

5



always adjust the harness to fit your child correctly for their comfort and safety. A loose fitting harness can be very dangerous.



adjust the shoulder harness length according to baby height.