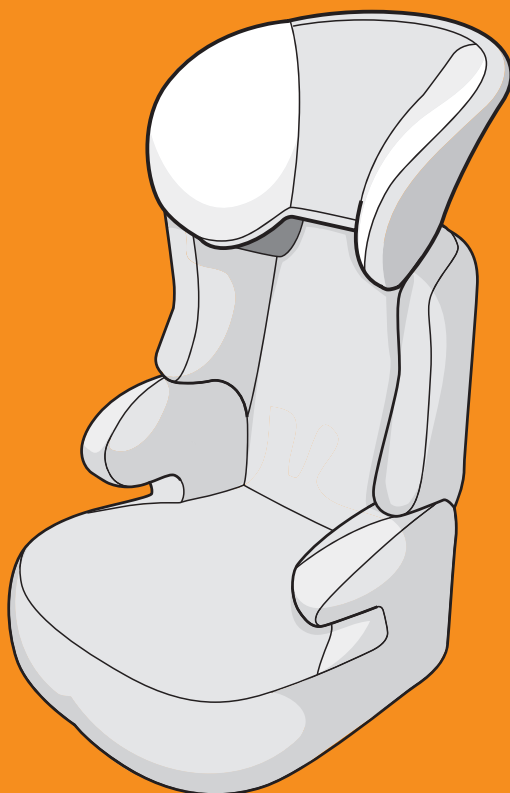
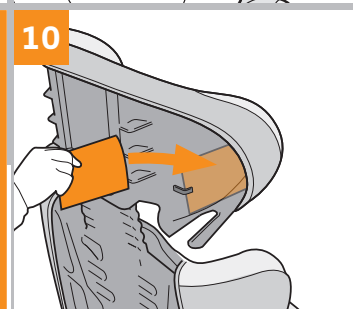
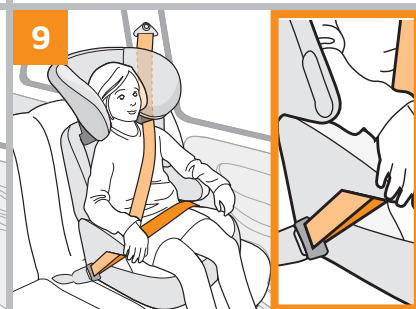
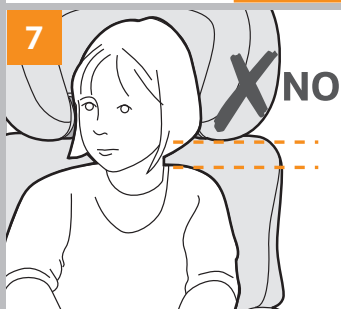
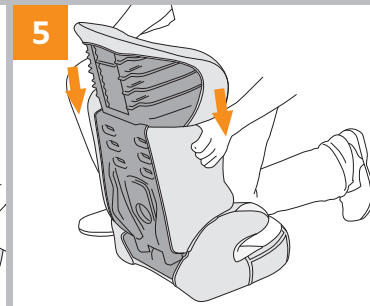
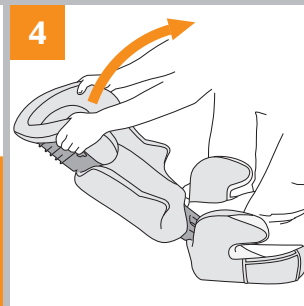
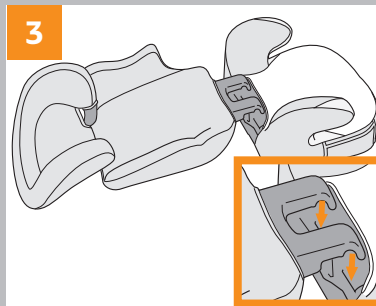


Type F9

23



FC74GB



We would like to congratulate you on your purchase of a group 2-3 car seat. If you would like to obtain any help regarding this product, you can contact our **customer service**.

### SAFETY INSTRUCTIONS

**WARNING:** Please read these instructions carefully before using the seat and keep this guide in a safe place for future reference. If you do not comply with these instructions, the safety of your child could be compromised. Only install your group 2-3 booster seat on a forward facing seat that has a 3-point seat belt (1).

- The hard items and the items in plastic of the child restraint system must be located and installed so that when used normally, they do not get trapped under a movable seat or in the vehicle door.
- Make sure the straps to attach the restraint system to the vehicle are kept tight and adjust the straps that hold in the child. The straps must not be twisted.
- Make sure the sub-abdominal straps are run as low as possible, to keep the pelvis in good position.
- Replace the restraint system if it has been subjected to violent shocks in an accident.
- It is dangerous to change or add elements to the restraint system in any way without the authorisation of the competent authority, or not to carefully follow the instructions on installation provided by the manufacturer of the child restraint system.
- Keep the seat out of direct sunlight so that the child does not get burned.
- Do not leave the child unattended in a child restraint system.
- Make sure that luggage and other items that might harm the child in the seat in the event of a shock are correctly stowed away.
- Do not use the child restraint system without the cover.
- Do not replace the seat cover with one that has not been recommended by the manufacturer, because it plays a direct role ensuring that the restraint system works effectively.
- If you have a doubt concerning the installation and correct usage of your seat, please contact the manufacturer of the child restraint system.
- Install your child restraint system on seats categorised as "Universal" in your car manual.
- Do not use weight-bearing contact points other than those described in the instructions and indicated on the restraint system.
- Always use the back seat if possible even if the Highway Code stipulates that using the front seat is allowed.
- Always ensure that the seat belt has been fastened.
- Do not clothe the child in garments that are too bulky in winter.

### Your Group 2-3 booster seat (2)

1. Height adjustable head support
2. Diagonal belt guide (x2)
3. Back
4. Seat

### Assembling the booster seat

Place both tongues on the back into the notches on the seat (3), and then raise the back up vertically (4). Press firmly on the back to ensure that both tongues of the back of the seat are securely in place (5). The tongues on the back must be pushed down as far as they will go into the seat.

### In-car installation

Gr. 2-3, from 15 to 36 kg (from approximately 3 to 12 years)

Ensure that the adjustable head support has been set to the size of your child before starting to install it in your vehicle. Your car seat is group 2 and 3 approved and has a back support. **Never remove the back of your car seat. Without the back, your child will not be protected laterally.**

- Adjusting the head support: the adjustable head support is designed to be used as your child grows up providing maximum lateral protection. The belt guides of the head support must be placed as close to your child's shoulders as possible (6) (7).

Place the car seat against the back seat of your vehicle (8). Seat your child on the car seat. The diagonal end of the belt goes into the strap guide of the head support and under the opposite armrest. The lap end of the safety belt goes under the armrests (9). Fasten the safety belt. Ensure that the belt is tight enough and not twisted.

### Cup holder (as an option in some models)

Slide the cup holder of the car seat into the guides on each side of the seat (10). **WARNING:** do not place heavy objects that might fly out of the cup holder in the event of an impact.

### Storage of the instruction manual

Store this instruction manual, depending on the model of your vehicle, either in the pouch provided, or by slipping it into between the shell and the cover of the seat (11).

### Maintenance advice

All the material parts can be removed. Slight stains can be removed using a damp sponge soaked in soapy water or it can be washed by hand at 30° in soapy water. Do not use bleach, do not iron, do not machine wash, and do not tumble dry.

### WARNING

- This car seat is a "Universal" child restraint system. It has been approved in accordance with regulation N°44/04, and is suitable for general use in vehicles and is compatible with the majority (some exceptions) of vehicle seats.
- It is more likely that the seat is perfectly compatible if the vehicle manufacturer states that its vehicles are suitable for taking "Universal" child restraint systems.
- This restraint system is classified as "Universal" in accordance with the strictest approval criteria, whereas earlier models do not correspond to these new provisions.
- It can only be adapted to vehicles with 3-point safety belts that are either fixed or have a roller mechanism and that have been approved compliant with the UN/ECE N° 16 or other equivalent standards.
- If in doubt, contact the manufacturer or retailer of the restraint system.

(TEAMTEX)

Z.I. de Montbertrand - Rue du Claret  
38230 Charvieu-Chavagneux  
FRANCE

[www.nania.com](http://www.nania.com)